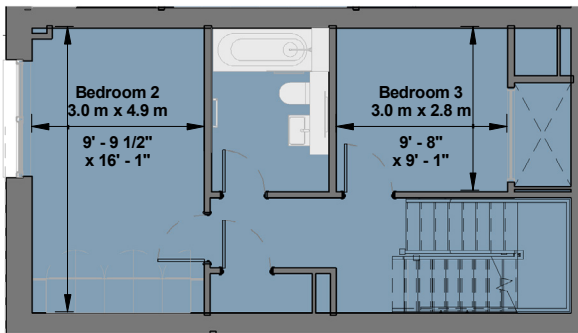
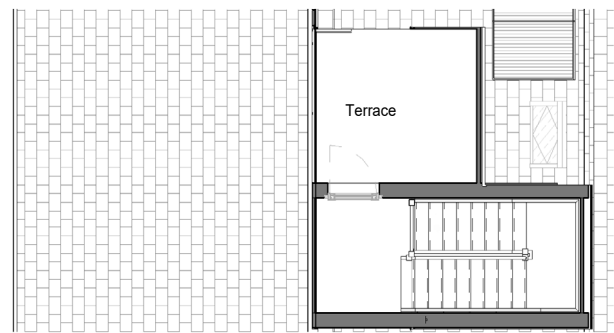


Townhouse

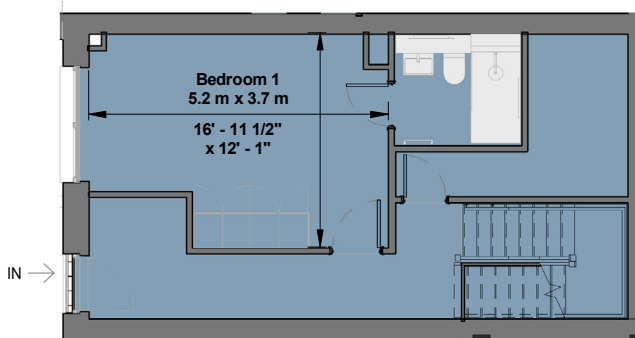
3 Bedroom | Type 3 | 1,442 / 1,475 sq. ft.



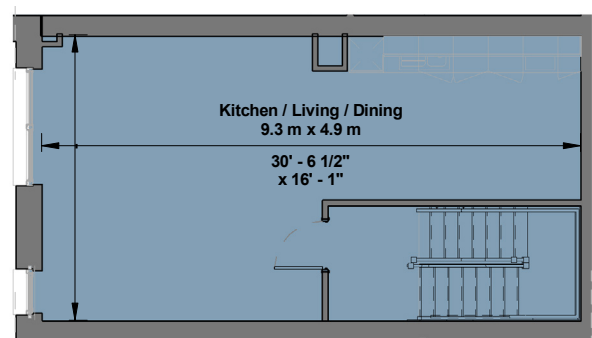
2nd Floor



3rd Floor



Ground Floor



1st Floor

The Agency: 0113 403 3058

@ironworksleeds

www.ironworksleeds.co.uk

The Ironworks, David Street,
Holbeck Urban Village, LS11 5QP



Specification

Flooring

- Engineered oak floor in corridors, kitchen, living and dining areas
- Carpets in bedrooms
- Porcelain tiled flooring in the bathroom

Bathrooms

- Stainless steel fixtures and fittings
- White, wall hung bathroom suite
- Porcelain tiled walls
- Aluminium towel radiator

Kitchens

- Fully fitted kitchen units with soft close doors and drawers
- Silestone worktop and splashback
- Stainless steel mixer tap

Appliances

- Bosch integrated fridge freezer
- Bosch integrated dishwasher
- Bosch stainless steel integrated electric oven with Blanco black glass induction hob

General

- American white oak veneer doors
- Brushed stainless steel door handles, sockets and switches
- Classic wet system radiators
- LED spotlights and pendant lighting

igloo Regeneration on behalf of PfP igloo has taken all reasonable care in the preparation of the contents of this information and intends that the information is accurate at the time of its production. However, such information can be subject to change and therefore we do not warrant its accuracy. Particulars are for illustration only. We operate a policy of continuous product development and individual features may vary from time to time. Consequently, these particulars should be treated as general guidance only and do not constitute a contract, part of a contract, or a warranty. You should take appropriate steps to verify any information upon which you wish to rely. Igloo Regeneration on behalf of PfP igloo shall not be liable for damages of any kind or nature whatsoever arising out of or related to any form of marketing literature or the information it contains.

